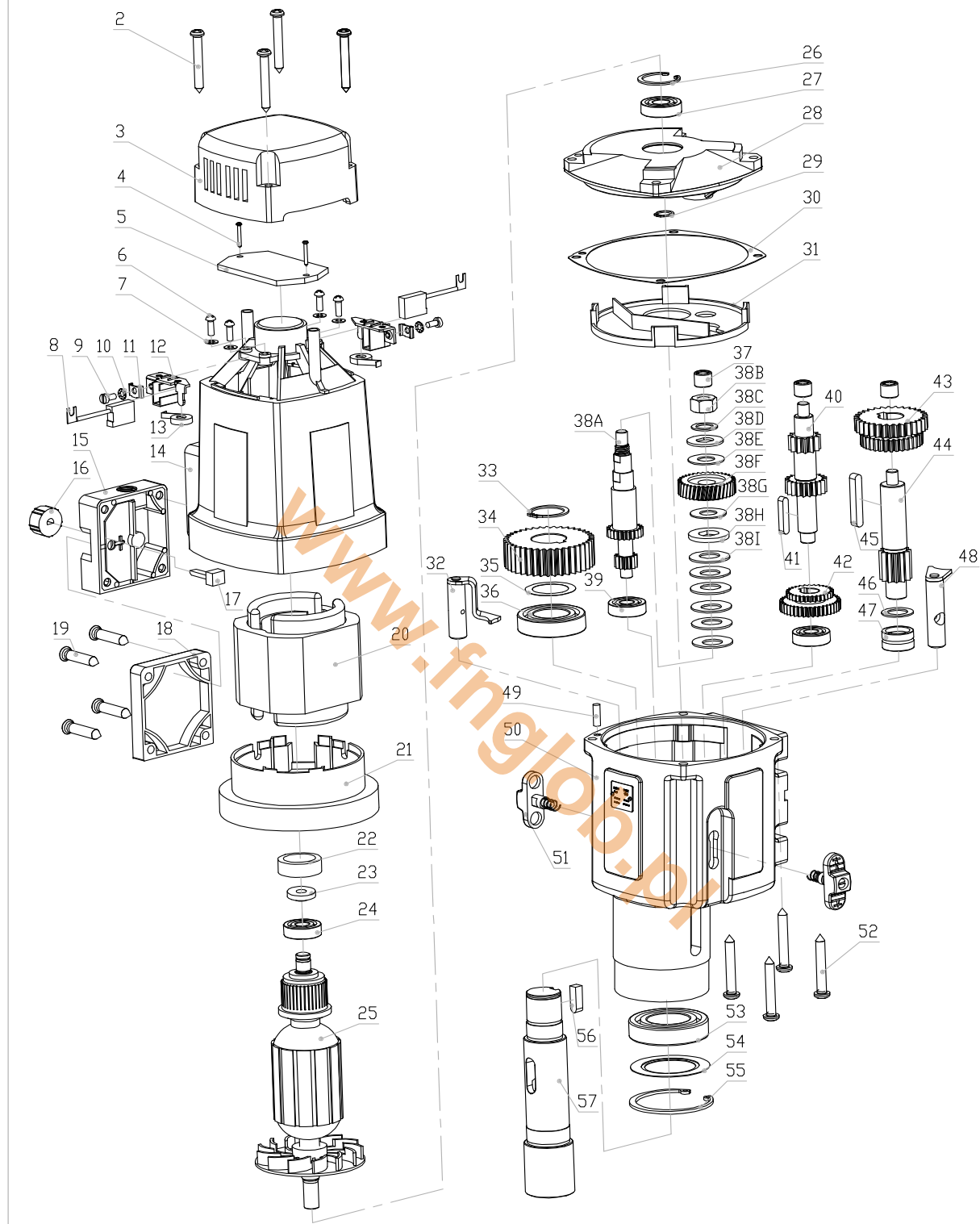


EUROBOOR SPARE PART LIST ECO.100/4		
No.	Part number.	Description.
1	100.4305	Motorunit 220-240v
	100.4306	Motorunit 110-120v
2	100.0306	Screw BK 4,8x45
3	100.0322	End Cover
4	100.0357	Screw BK4x16
5	100.4006	Control unit 2 (110 & 220v)
6	100.0373	Bolt M4x12
7	100.0374	Washer DIN137 M4
8	100.0368	Carbon brush set 220-240v
	100.0369	Carbon Brush set 110-120v
9	100.0372	Carbon brush assambly
10		
11		
12		
13		
14	100.4388	Housing
15	100.4576	Torque Switch housing
16	100.4574	Red Wheel
17	100.4573	Torque Potentiometer 1K
18	100.0611	T/S Switch cap
19	100.0617	Screw PKVZ6x45
20	100.4383	Field Coil 220-240v
	100.4384	Field Coil 110-120v
21	100.0391	Baffle
22	100.0346	Rubber Fitting Ring
23	100.0348	Armature Speed Disc
24	080.0351	Bearing 6000
25	100.4318	Armature 220-240v
	100.4319	Armature 110-120v
26	100.0581	Circlip 472/28
27	032.0171	Bearing 6001
28	100.4401	Inner Gear Plate
29	100.0571	Circlip 471/11
30	100.0458	Gasket big
31	100.4621	Plate for Gear Casing
32	100.4342	Clutch Shaft 1
33	100.0426	Circlip 471/24
34	100.4324	Spindle Gear 38T
35	100.4411	Adaptor Ring
36	100.0446	Bearing 6005
37	040.0161	Needle Bearing HK0810
38A	100.4321	Axle 1 28+13T
38B	100.4350	Nut

38C	100.4351	Washer 12x18x1
38D	100.4338	Friction Lock Disc 1
38E	100.4340	Brass Disc 1
38F	100.4344	First Gear 36T
38G	100.4349	Brass Disc 2
38H	100.4353	Friction Lock Disc 2
38I	100.4352	Tension Shell 28
39	080.0351	Bearing 6000
40	100.4332	Axle 2 12+17T
41	100.4496	Key 5x5x28
42	100.4491	Double Gear 1 25T+39T
43	100.4320	Double Gear 2 36T+41T
44	100.4334	Axle 3 13T
45	100.4526	Key 6x6x40
46	100.0486	Washer 14x22
47	080.0481	Bearing RNA4900
48	100.4336	Clutch Shaft 2
49	100.0549	Casing Pin
50	100.4327	Gear Casing 220V (2015)
	100.4328	Gear Casing 110v (2015)
51	040.0286	Gear Switch
52	100.0459	Screw 5,5x45
53	100.0466	Bearing 6006
54	100.0476	Washer for bearing 6006 2Z
55	100.0471	Circlip 472/55
56	100.4431	Key 6x6x23
57	100.0461	Drive shaft 38X158
58	100.0126	Screw SSM6x35
59	100.0031	Washer M8
60	100.0122	Motor Fixing Plate
61	100.4041/X	Slide
62	020.0111	Washer M6 DIN7980
63	020.0146	Screw SSM6x25
64	100.0066	Screw SSM6x30
65	020.0156	Screw SSM6x20
66	100.0046	Motorholder
67 - 68	100.0046/A	Screw + nut packed as 1
69	100.0076/X	Rack
70	020.0512	Key 8x7x70
71	020.0513	Screw SSM8x16
72	PP.RLEU-220	RP EB 220v
	PP.RLEU-110	RP EB 110v
73	020.0101	Panel Screw BKVZM4x8
74-79	100.1018 (220v) 100.1018A (110v)	Speed control unit
79	050T.0016	Nut M3
80	020.0063	Screw M5x20

81 + 82	100.0081/X	Alu rail set for Mark II Big frame
83	100.4002	Control unit 1 230v (2015)
	100.4003	Control unit 1 110v (2015)
84	020.0298	Motor cable clamb
85	020.0063	Screw M5x20
86	020.0081	End Screw BKVZM6x20
87	020.0077	End plate
88	100.4001/X	Frame MKII
89	020.0516	Screw SS M5 x 10
90+91A+91B	100.4610	Moter cable complete V6
92	100.0101	Capstan hub assembly
93	100.0116	Arm for capstan
94	020.0036	Main cable complete (European plug)
	020.0036/USA	Main cable complete (US plug)
95+96	020.0182	Grounding Screw/washer/Nut
97	PP.100-4EU/4	FP EB ECO.100/4
98	100.0152	R/L Switch (push) 1800 W
99	030E.0091/Y	Motor switch (5-pin) 220-240V YELLOW
	030E.0092/Y	Motor switch (5-pin) 110-120V YELLOW
100	020.0017	Fuse 5x20 F2A
101	020.0016	Fuse holder
102	020.0206	LED indicator set
103	020.0011	Magnet Switch
104	050T.1009	Potentiometer 100K (turn)
105 - 106	020.0037	Cable clamp
107 - 110	020.0151	Magnet spring ball
111	100.0006	Screw SSM8x25
112	020.0201/2	Sensor
113	100.0031	Washer M8
114	100.1010	Filter
115	100.0038/1	Electro Magnet

ECO. 100/4



ECO. 100/4

